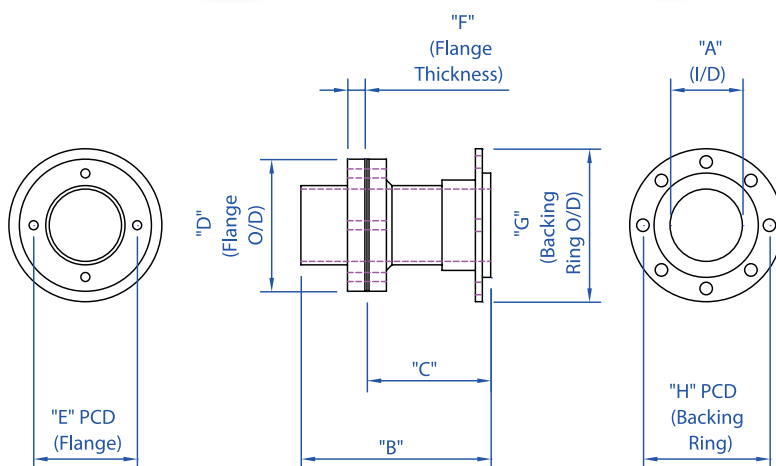
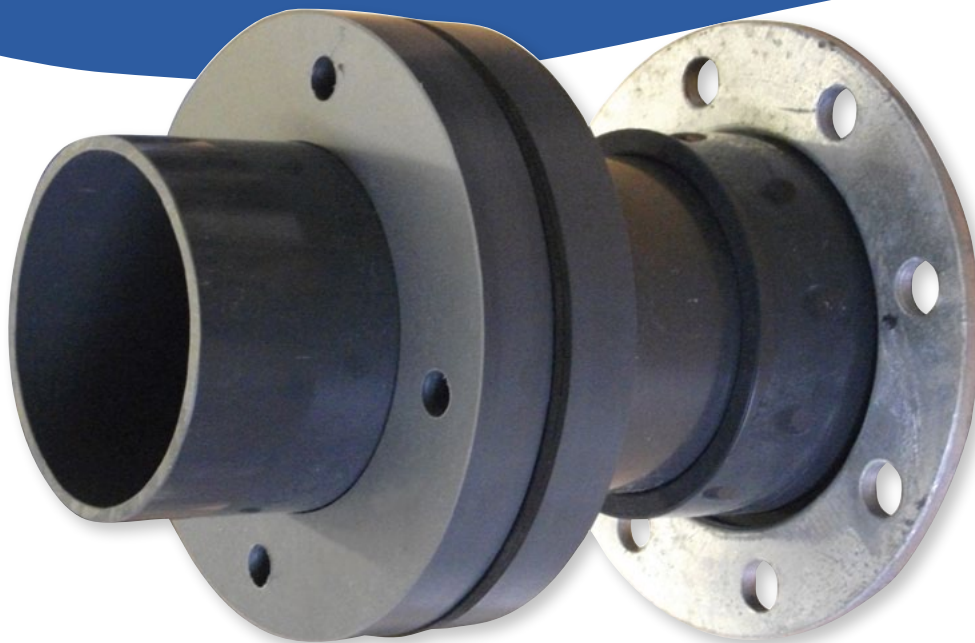


# Tank Connectors - PVC Fully Flanged Type



"A" (I/D)	"B"	"C"	"D" Flange O/D	"E" Flange PCD	No. of Flange Holes	"F" Flange Thick- ness	"G" Backing Ring O/D	"H" Backing Ring PCD	No. of Backing Ring Holes
1"	180mm	108mm	110mm	70mm	4	18mm	115mm	85mm	4
1.1/4"	205mm	123mm	120mm	80mm	4	20mm	140mm	100mm	4
1.1/2"	205mm	123mm	125mm	85mm	4	20mm	150mm	110mm	4
2"	230mm	143mm	140mm	100mm	4	20mm	165mm	125mm	4
2.1/2"	255mm	158mm	152mm	114mm	4	25mm	185mm	145mm	4
3"	255mm	158mm	165mm	126mm	4	25mm	200mm	160mm	8
4"	270mm	173mm	195mm	155mm	4	25mm	220mm	180mm	8
5"	275mm	178mm	225mm	182mm	8	25mm	250mm	210mm	8
6"	295mm	198mm	250mm	210mm	8	25mm	285mm	240mm	8
8"	315mm	218mm	300mm	260mm	8	25mm	340mm	295mm	12
10"	335mm	238mm	330mm	290mm	12	25mm	405mm	355mm	12

Heavy duty fully flanged type manufactured from PVC which are fitted to the tank with a fixed external flange and bolt-up internal flange. These are secured to the tank wall with M12 stainless steel fixings. Fixings and sealant are supplied. This type of tank connector enables a more secure seal to the tank wall and is suitable for more industrial applications. The range is available from 2" up to and including 10".

All supplied complete with EPDM gasket, stub flange and galvanised steel backing ring drilled to NP 16 configuration. The stub flange is supplied loose, requiring a solvent cement joint to be made by others.